

# FIMS

## Release Notes v14.44

This document contains a summary of new features and fixes to known issues released in the FIMS 14.44 August 2017 patch.

## Upgrade Overview

Clients with versions 14.40 or later can update their system using the 14.44 patch. See [How to Install the Patch](#).

Clients with versions earlier than 14.40 must contact FIMS Support and request the full FIMS upgrade to 14.44. See [FIMS Support](#) for contact details.

**Host\*Net clients** are scheduled to be upgraded on August 12th, 2017, during scheduled maintenance downtime.

## Contents

Upgrade Overview .....	1
FIMS 14.44 Enhancements.....	2
FIMS 14.44 Resolved Issues .....	4
FIMS Support .....	4
How to Install the Patch .....	5

## FIMS 14.44 Enhancements

### DonorCentral: New Debug Logging control

You can now turn Debug Logging on or off for DonorCentral Suggestions. Go to **Tools > System Utilities > DonorCentral > DonorCentral Options**. The new option is **Debug\_Logging**. Enter **Yes** to keep log files for DonorCentral suggestion retrieval. The default is **No**.

Log files begin with "SC," have a .json extension, and are stored in the Found temporary files folder. They are deleted during a full FIMS upgrade.

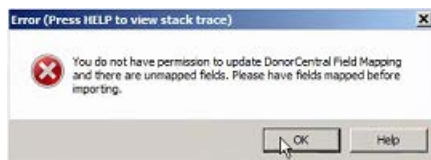
### DonorCentral: Upload enhancements

- Upload DonorCentral Fund Statements are now supported by DonorCentral in the same way as eDonorCentral. You can access these directly from the DonorCentral Menu and from the Crystal Fund Statements Export.
- The nightly and manual uploads to DonorCentral will send FIMS DonorCentral extract files for a couple of retries if the files fail to make it to the DonorCentral destination.

**Note:** For FIMS versions 14.40-14.43, set up these new features by going to **Tools > System Utilities > DonorCentral > Setup DonorCentral Upload**, and click **Save**.

### DonorCentral: Suggestion Field Mapping change

Users who don't have permission to use DonorCentral Suggestion Field Mapping through menu security will not be able to map fields when Retrieving Suggestions from DonorCentral.



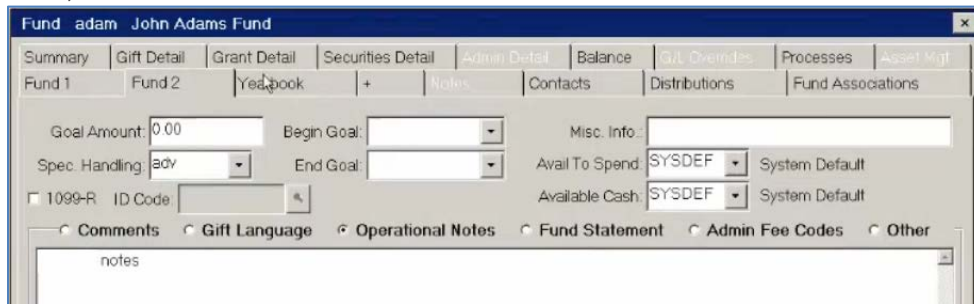
For unmaped fields, users will be prevented from creating applications from imported suggestions.

### General Ledger: Additional classes allowed in Master Chart of Accounts

The Master Chart of Accounts now allows 120 fund classes.

## Fund Statements: New multi-line fund fields

In the Fund Statement Designer (**File Maintenance > GL > Fund Statement Designer**), new multi-line fund fields are now available that can be added to a fund statement layout: **Comments**, **Gift Language**, **Operational Notes**, and **Yearbook**.



The screenshot shows a software window titled "Fund - adam John Adams Fund". It features a tabbed interface with tabs for Summary, Gift Detail, Grant Detail, Securities Detail, Admin Detail, Balance, GL Overrides, Processes, and Asset Mgt. Below the tabs, there are sections for Fund 1 and Fund 2, and a "Yearbook" section with a "+" icon. The main area contains various input fields and dropdown menus, including "Goal Amount" (0.00), "Begin Goal", "End Goal", "Spec. Handling" (adv), "Avail To Spend" (SYSDEF), and "Available Cash" (SYSDEF). At the bottom, there are radio buttons for "Comments", "Gift Language", "Operational Notes", "Fund Statement", "Admin Fee Codes", and "Other". A text area labeled "notes" is visible at the bottom.

## System: FIMS Database Version available in Help

The **Help > FIMS About** menu option now displays the FIMS Database version and the FIMS version to confirm that the database was updated with the current FIMS version.

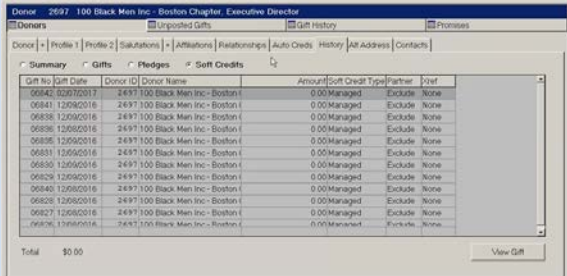
## System: New FIMS Help location

The **Help > Online FIMS Help** menu option now opens the new location of the FIMS Help Documentation: [https://www.blackbaud.com/files/support/helpfiles/fims/hh\\_start.html](https://www.blackbaud.com/files/support/helpfiles/fims/hh_start.html)

The new location is the maintained site going forward for FIMS releases and information updates.

## FIMS 14.44 Resolved Issues

The following issues are resolved in this release. We have provided the case numbers for internal referencing along with a description of the issue.

ID	Module	Description
22560	ODBC/SQL	The FIMS ODBC 92 Configuration installs driver <code>pgoe27.dll</code> when the Progress OpenEdge version is 11.6 or 10.2B08.
23325	DonorCentral	<b>Date-Time</b> fields from <b>DonorCentral Suggestions</b> now map into FIMS date fields for <b>DonorCentral Suggestion Field Mapping</b> .
24810	Gifts	<b>Soft Credits</b> in the <b>Donor History</b> tab now display by the most recent gift first, with a descending gift date. 
24828	FIMS CRM	A FIMS CRM syncing issue that occurred following version 14.40 that displayed the error, "Error=Could not find class or interface," was resolved by adding assemblies in <code>Salesforce.pf</code> .
26192	General Ledger Fund Statements	Previously, the <b>Fund Name</b> from an anonymous granting fund displayed "Transfer from <fund name>" under <b>Name</b> on the fund statement Gift Detail Section for an Inter-fund grant. It now displays "Transfer from Anonymous."

## FIMS Support

### Need Help or Have Questions?

If you have questions or need assistance in any way, please contact MicroEdge Technical Support.

**Online:** Login to PowerME at [www.microedge.com](http://www.microedge.com). Click the **Case** tab at the top of the homepage and click 'Create New Case'.

**Phone:** (800) 256-7772

**Support Hours:** M-F, 8:00 am – 8:00 pm ET

## How to Install the Patch

Patches are installed using the **FIMS Update and Patch Install Utility**.

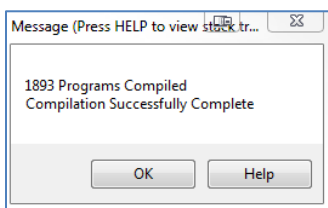
1. Open the MicroEdge Resource Library:  
<https://community.blackbaud.com/products/microedge/resources>
2. Search for "FIMS 14.44."
3. Download the FIMS Patch zip file and save it in an easily accessible location.
4. Locate the saved zip file, and double-click on it to open the files.  
**NOTE:** It isn't necessary to unzip or extract the files.
5. Double-click on the **Assemblies** folder to open the folder.
6. In the **Assemblies** folder, copy all the contents and paste them into the assemblies folder located in **...npofoundassemblies**. When the popup displays about files already in the folder, choose **Copy and Replace**.
7. Log into FIMS.
8. Open **Tools > System Utilities > FIMS Update and Patch Install Utility**.
9. Click **Browse** to locate and select the patch file named **p1440t44.zip**.
10. Click **Open** to display the patch notes.
11. Click **Install**.  
**NOTE:** If you see:
  - A "Single-user mode" error, see [Single-User Mode Error Troubleshooting](#).
  - A "wfound.pf" error, exit FIMS and start at step 7. The error will not display again.
12. When a FIMS Email prompt displays **Update Complete**, click **Send**.
13. Log in to FIMS and Select **Help> About FIMS**.
  - FIMS version should now be **14.44** dated **8/4/2017**

### Single-User Mode Error Troubleshooting

If you are a single user, you may get an error during the installation that says something like "database found is in use in single-user mode" (your exact message may be different but single-user mode will be part of it).

To resolve this issue, follow the steps below:

1. Click **OK** and complete installation.
2. Run the FIMS compiler before using the patched programs:
  - a. In FIMS, select **Tools > System Utilities > Admin Utilities > FIMS Compiler**.
  - b. Click **Compile**.
  - c. When complete, a message displays (number of programs may vary):



- d. Click **OK** to complete the upgrade.